

# GIANT LIFT EQUIPMENT MFG CO INC

PO Box 626 - 185 Lafayette Road - North Hampton, N 03862-0626  
 603-964-5127 \* 800-52-GIANT \* Fax: 603-964-9263



Company: \_\_\_\_\_

Contact: \_\_\_\_\_

Address: \_\_\_\_\_

Ph: \_\_\_\_\_

City/state/zip: \_\_\_\_\_

Fax: \_\_\_\_\_

Project reference: \_\_\_\_\_

Ship to city/state: \_\_\_\_\_

## Giant Lift - RJS model Vertical Reciprocating Conveyor 4/11/12

Lift Capacity: \_\_\_\_\_

Floor mount

Edge of mezzanine

Total Lift Hgt: \_\_\_\_\_

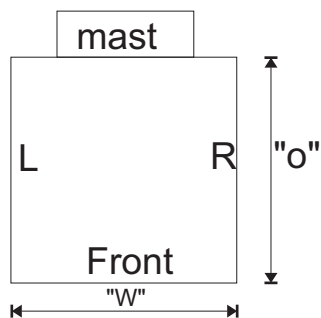
Ramp

Through floor

# of levels served: \_\_\_\_\_

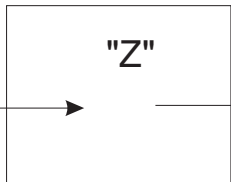
Pit mount

(including starting point)

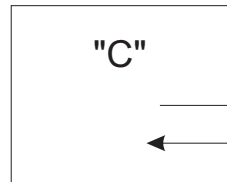


### ACCESS PATTERN

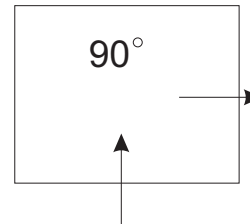
"Z"



"C"



"90"



"o" platform out : \_\_\_\_\_

"w" platform width: \_\_\_\_\_

Primary voltage: \_\_\_\_\_

NEMA requirement: \_\_\_\_\_

Standard color: Grey enamel

#### LOWER GATE:

Single swing: \_\_\_\_\_ (show swing)

Double swing: \_\_\_\_\_

Single Vertical: \_\_\_\_\_

Double Vertical: \_\_\_\_\_

Horizontal: \_\_\_\_\_

#### UPPER GATE:

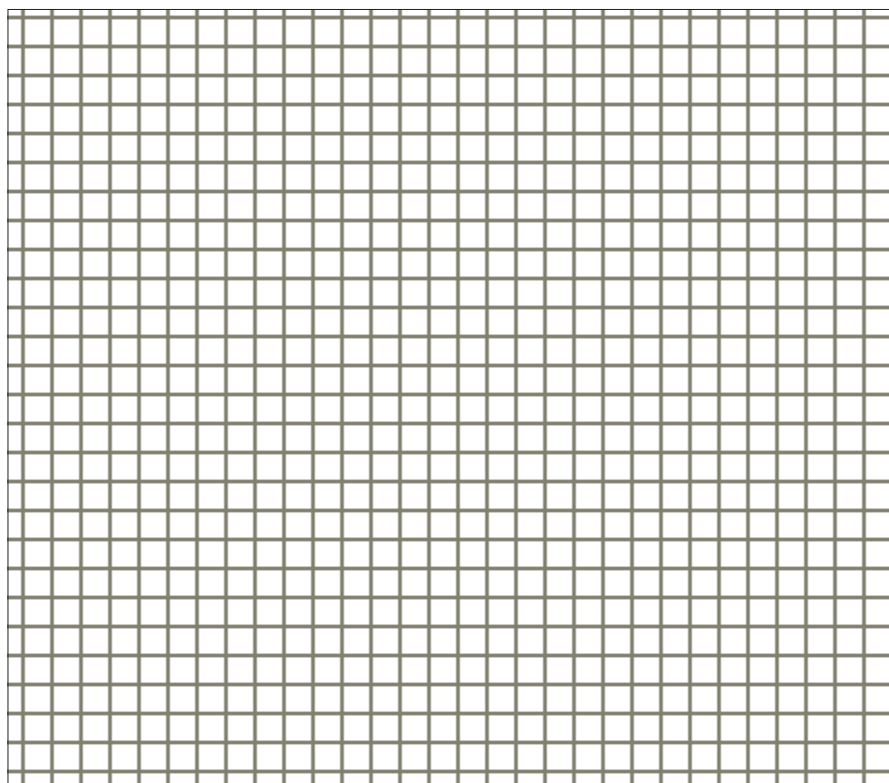
Single swing: \_\_\_\_\_ (show swing)

Double swing: \_\_\_\_\_

Single Vertical: \_\_\_\_\_

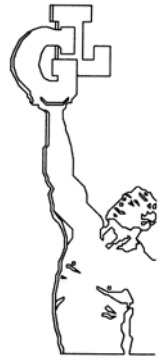
Double Vertical: \_\_\_\_\_

Horizontal: \_\_\_\_\_



Show enclosures required, walls, mezzanine edge, openings or any other pertinent information. New construction or existing?

**GIANT LIFT EQUIPMENT MFG CO INC**  
PO Box 626 - 185 Lafayette Road - North Hampton, N 03862-0626  
603-964-5127 \* 800-52-GIANT \* Fax: 603-964-9263



Page 2 of 2

What is being transported \_\_\_\_\_

Size of largest item (preferred platform size) \_\_\_\_\_

weight of heaviest item (capacity required?) \_\_\_\_\_

Number of levels served \_\_\_\_\_

total travel (floor to floor) \_\_\_\_\_

existing shaft? \_\_\_\_\_

If so, size of shaft \_\_\_\_\_

access pattern \_\_\_\_\_  
on an off same side, opposite sides or 90 degree

any space restrictions, if so what? \_\_\_\_\_

How often will VRC be used \_\_\_\_\_

Primary voltage \_\_\_\_\_

Application - thru hole in floor, mezzanine edge? \_\_\_\_\_

Any special requirements or notes: \_\_\_\_\_